

## GT Series Pressure Transmitter

### Description:

The GT series 2 wire pressure transmitter is a highly accurate instrument with a backlit LCD display designed for industrial automation and precision measurement. It is widely used in monitoring of pressure, differential pressure and vacuum.

The built-in temperature compensation mechanism enables it to maintain high-precision measurements under different ambient temperatures.



### Features:

- ▶ Back-lit display
- ▶ Zero-span adjustment
- ▶ Multiple units display
- ▶ A bar graph for the measured parameter

### Few Major Applications:

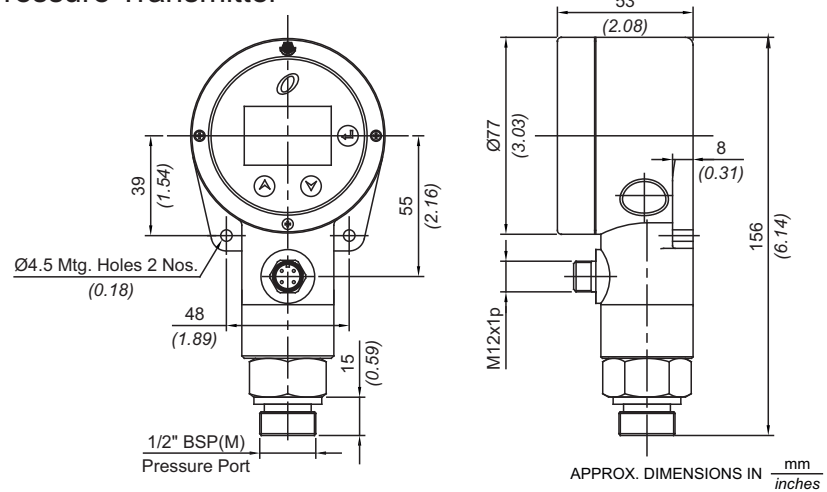
- ▶ Machine tools industry
- ▶ Automation systems
- ▶ Lubrication skids
- ▶ Fire fighting systems
- ▶ Filtration systems
- ▶ HVAC systems
- ▶ Water treatment
- ▶ Pump systems

### Specifications:

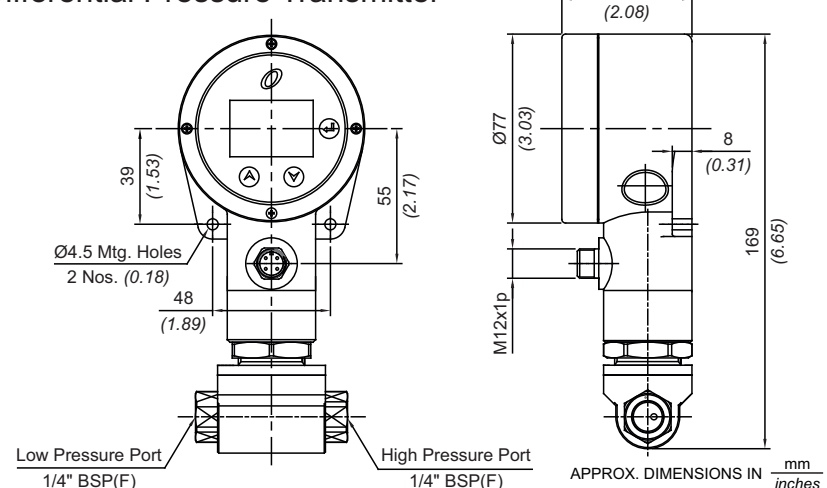
- ▶ Range: (-)1...0 ~ 0.1...600 bar
- ▶ Over pressure limit: 1.5 times FS
- ▶ Pressure type:
  - ▶ Gauge pressure
  - ▶ Absolute pressure
  - ▶ Differential pressure
- ▶ Accuracy:  $\pm 0.5\%$  FSR
- ▶ Long term stability:  $\pm 0.3\%$  FS/year
- ▶ Power supply: 12-30 VDC; 24 VDC recommended
- ▶ Constant current excitation: 0.4 mA
- ▶ Constant voltage excitation: 2.5 V
- ▶ Electrical connection: M12 x 1 (4-pin plug connector)
- ▶ Enclosure MOC: Polycarbonate
- ▶ Wetted parts: SS316/Ceramic
- ▶ Seal material: Viton
- ▶ Display range: (-)19999 ~ 99999
- ▶ Ambient temperature: (-)20 ~ 80°C
- ▶ Process temperature: (-)40°C to +80°C
- ▶ Storage temperature: (-)10°C to 60°C
- ▶ Temperature drift: <35 ppm/°C
- ▶ Output signal:
  - ▶ 4 ~ 20 mA (2 wires)
- ▶ Load resistance: (VCC-12)/ 20 mA
- ▶ Reverse polarity protection

### Installation Drawing:

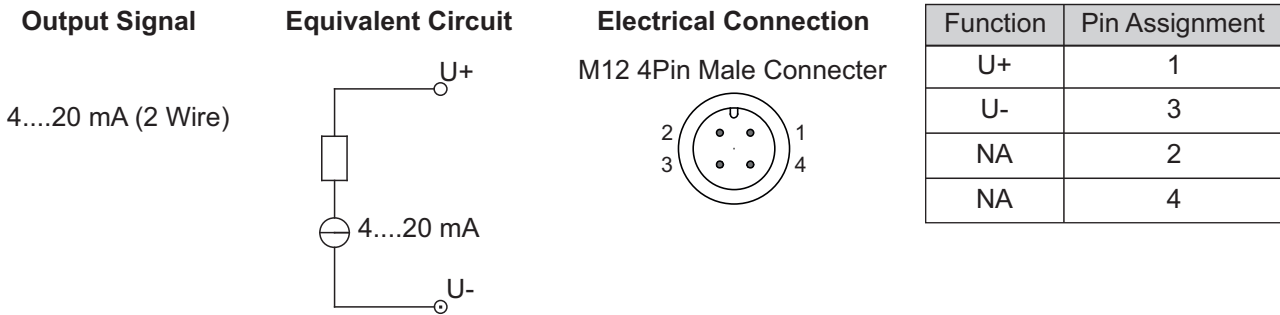
#### Pressure Transmitter



#### Differential Pressure Transmitter



## Electrical Connections:



## Range code table (Scale - bar):

### Pressure range:

Code	H01	H07	H10	H15	H25	H4T	H1H	H2H	H4H	H6H
Range	0 ~ 1	0 ~ 7	0 ~ 10	0 ~ 15	0 ~ 25	0 ~ 40	0 ~ 100	0 ~ 200	0 ~ 400	0 ~ 600

### Differential Pressure range:

Code	H01	H04	H06	H10	H25
Range	0 ~ 1	0 ~ 4	0 ~ 6	0 ~ 10	0 ~ 25

## How to order:

Group 1	Group 2	Group 3	Group 4	Group 5	Group 6	Group 7	Group 8
Non std allocation	Model	Electrical connection	Device type & accuracy	Range	Electrical output	Pressure port size	Sensor type
<input type="checkbox"/> A prefix "N" is used in the model code in case of any non standard options / accessories that are provided with the switches The prefix is subject to change as per specific requirement	<b>GT</b> = Pressure transmitter with a display	<b>03</b> = M12 x1; 4 pin plug connector	<b>PG01</b> = Gauge pressure; 0.5% accurate  <b>PA01</b> = Absolute pressure; 0.5% accurate  <b>*PD01</b> = Differential pressure; 0.5% accurate	Please select a range from the range code table	<b>E0</b> = 4 ~ 20 mA analog o/p	<b>#S03</b> = ½" BSPM <b>#S04</b> = ½" NPTM <b>S11</b> = ¼" BSPF  Contact sales office for other port sizes	<b>#01</b> = Ceramic (only for ranges upto 200 bar)  <b>02</b> = SS316

\* Available with options S11 (Gr. 7) and 02 (Gr. 8)

# Not available for Differential pressure transmitter

**Note : Please contact sales office for a feature to display any unit other than 'bar'**

eg. A GT series pressure transmitter having 0~10 bar gauge pressure with ½" BSPM port size and ceramic sensor will be specified by

Group 1	Group 2	Group 3	Group 4	Group 5	Group 6	Group 7	Group 8
<input type="checkbox"/>	GT	03	PG01	H10	E0	S03	01

## Kaustubha Udyog (Orion Instruments)

### Registered Office :

7, Parichaya Society, 1000/6D, Navi Peth, Pune 411 030 INDIA  
 Tel.: +91-(0) 20-24393877 / 24393577 / 24391592  
 Telefax : +91-(0) 20-25460486 / 24532124

### Marketing Office :

S. No. 36/1/1, Sinhgad Road, Vadgaon Khurd, Pune 411 068. INDIA  
 Tel.: +91-(0) 20-24393877 / 64700835 / 64700836  
 Telefax : +91-(0) 20-24393577 / 25460486



Certificate No.: FM 72815

**Email :** ku.pressure@gmail.com / info@orion-instruments.io

**Website :** www.orion-instruments.io